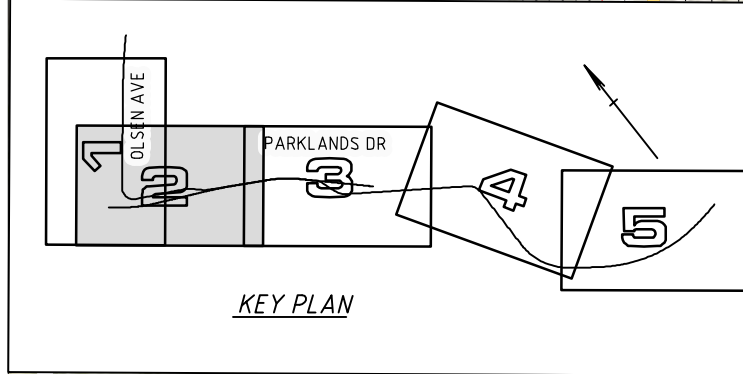


LEGEND

- LAYOVER AREA
- LRT ALIGNMENT (MCH1)
- LRT ALIGNMENT IN CUT
- PARKLANDS DESIGN - BRIDGE STRUCTURE
- PARKLANDS DESIGN - CARRIAGEWAY
- PARKLANDS DESIGN - FOOTPATH
- PARKLANDS DESIGN - TRAFFIC ISLANDS
- PROPOSED RESUMPTION BOUNDARY
- PROPERTY BOUNDARY
- LRT VEHICLE - 45m LONG
- LRT "CROSSOVER" - 24m LONG
- LRT "TURNOUT" - 26.07m LONG



PRELIMINARY ISSUE
NOT FOR CONSTRUCTION

<p>© Parsons Brinckerhoff Australia Pty Limited ("PB") Copyright in the drawings, information and data recorded in this document ("the information") is the property of PB. This document and the information are solely for the use of the authorised recipient and this document may not be used, copied or reproduced in whole or part for any purpose other than that for which it was supplied by PB. PB makes no representation, undertakes no duty and accepts no responsibility to any third party who may use or rely upon this document or the information. NCSI certified Quality System to ISO 9001</p>				<p>PB PARSONS BRINCKERHOFF</p> <p>Level 4, Northbank Plaza 69 Ann Street GPO BOX 2907 Brisbane QLD 4001 Australia</p> <p>ABN 80 078 004 798 Telephone +61 7 3854 6200 Facsimile +61 7 3854 6500 Email: brisbane@pb.com.au</p>		<p>DO NOT SCALE</p> <p>Drawn SJS Drafting Check Approved Date 26.03.2009 Scale FULL SIZE 1:500 (m)</p>		<p>Designed AB Design Check This Drawing must not be used for construction unless signed as Approved</p>		<p>Client TRANS LINK Project GOLD COAST RAPID TRANSIT Title LAYOUT PLAN SHEET 2B</p>		<p>Original Size A1 Drawing No: 2108213A-TRA-0008 Rev: A4</p>	
A4	CDIMP FINAL SUBMISSION	SJS	26.03.09										
A3	CDIMP DRAFT SUBMISSION	SJS	20.02.09										
A2	CONCEPT DESIGN DRAWINGS DRAFT	SJS	30.01.09										
A1	CONCEPT DESIGN DRAWINGS DRAFT	SJS	19.12.08										
No	Revision	Notes: * indicates signatures on original issue of drawing or last revision of drawing	Drawn	Checked	Approved	Date							