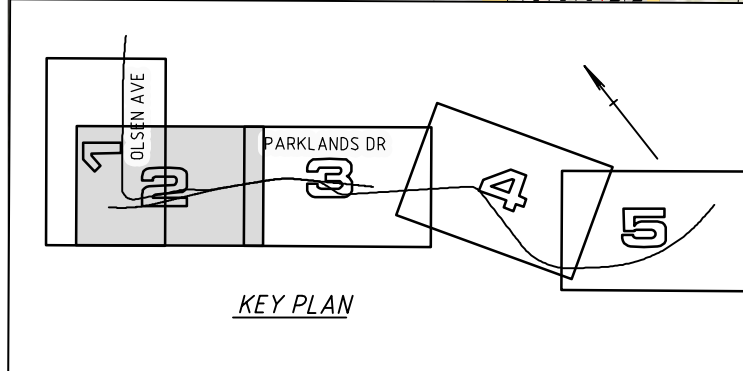


**LEGEND**

- LAYOVER AREA
- LRT ALIGNMENT (MCH1)
- LRT ALIGNMENT IN CUT
- PARKLANDS DESIGN - BRIDGE STRUCTURE
- PARKLANDS DESIGN - CARRIAGEWAY
- PARKLANDS DESIGN - FOOTPATH
- PARKLANDS DESIGN - TRAFFIC ISLANDS
- PROPOSED RESUMPTION BOUNDARY
- PROPERTY BOUNDARY
- LRT VEHICLE - 45m LONG
- LRT "CROSSOVER" - 24m LONG
- LRT "TURNOUT" - 26.07m LONG



**PRELIMINARY ISSUE**  
NOT FOR CONSTRUCTION

**SUPPLEMENTARY CDIMP**

A5	CDIMP FINAL SUBMISSION	SJS	26.03.09	© Parsons Brinckerhoff Australia Pty Limited ("PB") Copyright in the drawings, information and data recorded in this document ("the information") is the property of PB. This document and the information are solely for the use of the authorised recipient and this document may not be used, copied or reproduced in whole or part for any purpose other than that for which it was supplied by PB. PB makes no representation, undertakes no duty and accepts no responsibility to any third party who may use or rely upon this document or the information. NCSI certified Quality System to ISO 9001	<b>PB PARSONS BRINCKERHOFF</b>	DO NOT SCALE	Drawn SJS	Designed AB	Client <b>TRANSLINK</b>
A4	CDIMP FINAL SUBMISSION	SJS	12.03.09		Level 4, Northbank Plaza 69 Ann Street GPO BOX 2907 Brisbane QLD 4001 Australia	ABN 80 078 004 798 Telephone +61 7 3854 6200 Facsimile +61 7 3854 6500 Email: brisbane@pb.com.au	Drafting Check	Design Check	Project <b>GOLD COAST RAPID TRANSIT</b>
A3	CDIMP DRAFT SUBMISSION	SJS	20.02.09				Approved	Date 26.03.2009	Title <b>LAYOUT PLAN SHEET 2A</b>
A2	CONCEPT DESIGN DRAWINGS DRAFT	SJS	30.01.09				Scale FULL SIZE 1:500 (m)	This Drawing must not be used for Construction unless signed as Approved	Original Size <b>A1</b>
A1	CONCEPT DESIGN DRAWINGS DRAFT	SJS	19.12.08						Drawing No: <b>2108213A-TRA-0007</b> Rev: <b>A5</b>

Plot Date: 26 March 2009 - 3:00 PM    Cad File Name: J:\4445-TRA\PROJ\2108213A\_GCO\_GOLD\_COAST\108\_CADD\DRAWINGS\2108213A-TRA-0007.dwg