

# Gold Coast Rapid Transit

## Traffic and transport changes Queen Street (Wardoo Street to Nerang Street)

29 November 2010 - late 2011

**To make way for the future installation of light rail tracks and stations in Southport, roadworks and services relocations will be carried out in Queen Street (Wardoo Street to Nerang Street) from 29 November 2010 to late 2011. These works will involve some changes to existing traffic and transport arrangements.**

In this area, works will be conducted in two stages. Works will start on the residential side of Queen Street. Once works are completed in this area, traffic will be realigned to allow works to be conducted on the cemetery / school side.

### Initial works will involve:

- Establishing a site office at 262 Queen Street, a fenced hardstand area in part of Fass Park (near Wardoo Street) and a materials storage area on government land between Southport General Cemetery and Wardoo Street.
- Installing traffic signage and safety barriers around construction sites to create a safe work zone.
- Clearing some existing trees and vegetation on the cemetery / school side of Queen Street to make way for construction. Clearing will be conducted in accordance with approved environmental management plans.
- Commencing the relocation of underground water, wastewater, gas and telecommunications services on the residential side of Queen Street so that services are accessible once the light rail system is in place. Works will include excavation, and laying of pipes and cables.
- Preparing for the relocation of overhead power lines on the cemetery / school side of Queen Street. In the coming months, this will involve installation of new power poles and stringing of new wires.
- Removing construction debris from the work site using trucks.

### What to expect:

- From 29 November 2010 until late 2011, Queen Street will become one lane and one way westbound between Nerang Street and Wardoo Street, and the speed limit will be reduced to 40km/h (refer to map overleaf). This is required for the safety of road workers and motorists.
- On-street parking will not be available between Queen Street and Nerang Street during construction. Car parks will be transferred to new and existing off-street parking facilities around the project zone. Maps and information are available on the Gold Coast Rapid Transit project website.

- Access to local homes and businesses will be maintained wherever possible. Should temporary footpath, traffic lane or driveway closures be required, traffic control measures will be implemented to direct motorists, cyclists and pedestrians around works.
- Local residents and businesses will be contacted should any temporary changes to mail or waste collection services be required.
- Construction work will generally be carried out from 6:30am to 6.30pm Monday to Saturday. Some construction works may occur at night or outside peak periods to minimise disruption to traffic or businesses. The project team will advise you in advance if any night works are planned near your residence or business.
- Construction activities may result in some localised noise, dust and vibration. The project team will take steps to reduce these impacts wherever possible, and will conduct regular monitoring to ensure compliance with project guidelines.

All efforts will be made to keep disruption to a minimum. We thank you for your patience and cooperation.

These works are part of Stage One of the Gold Coast Rapid Transit project, which is delivering a world-class light rail system to the Gold Coast by 2014. Stage One will connect Griffith University with Broadbeach via Southport and Surfers Paradise.

For further information:

- Call **1800 967 377** to speak to the project team
- Visit the project website  
**[www.goldcoastrapidtransit.qld.gov.au](http://www.goldcoastrapidtransit.qld.gov.au)**

To register for email and / or SMS updates, send an email with your mobile number to [southport@tmr.qld.gov.au](mailto:southport@tmr.qld.gov.au).

**Please slow down – roadwork safety is your responsibility too.**

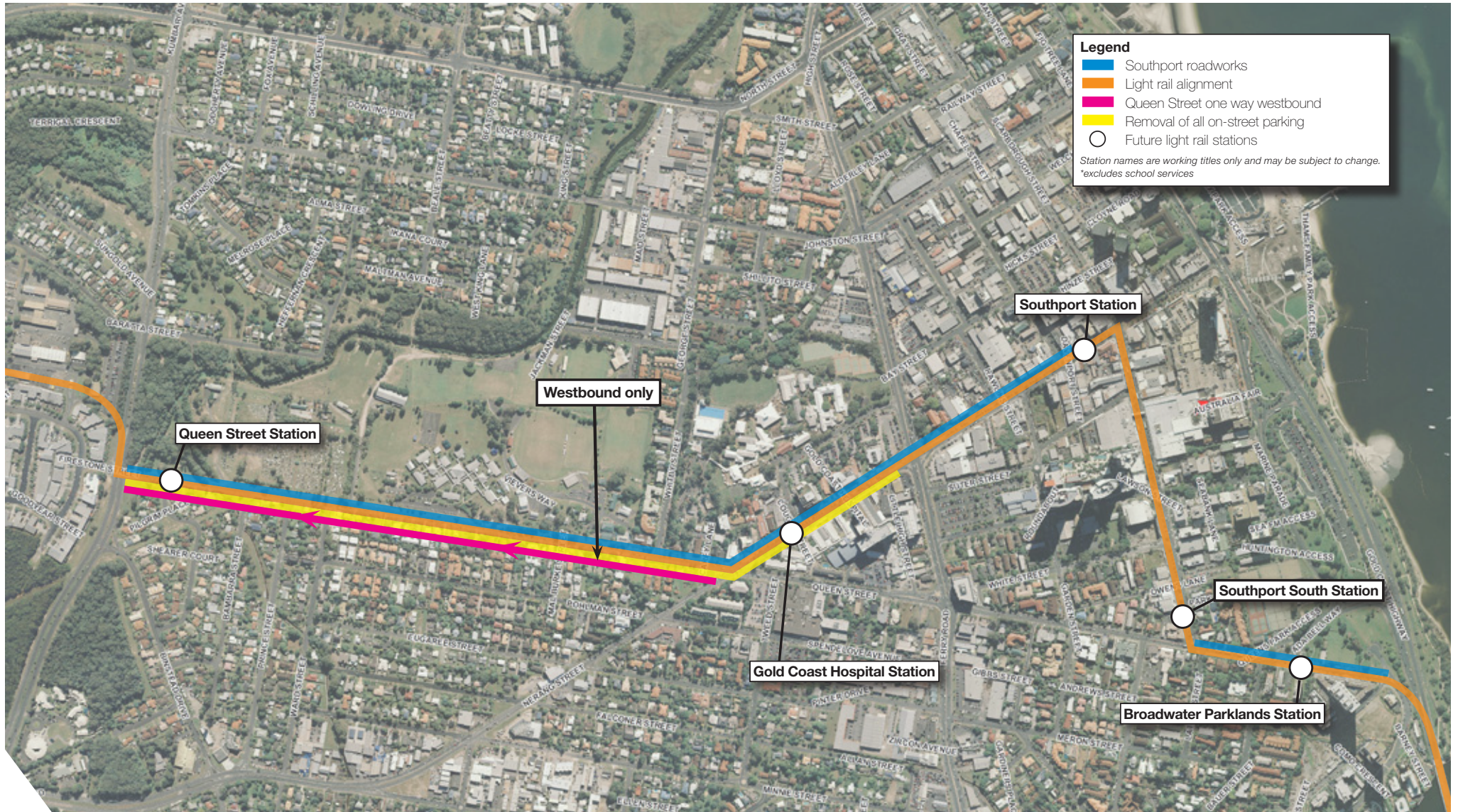
[www.goldcoastrapidtransit.qld.gov.au](http://www.goldcoastrapidtransit.qld.gov.au)



Australian Government



# Southport roadworks



[www.goldcoastrapidtransit.qld.gov.au](http://www.goldcoastrapidtransit.qld.gov.au)