

December 2010

## Changes to parking in your street

**From late 2010, the Gold Coast Rapid Transit project will start early construction works in Broadbeach to bring a world-class light rail system to the Gold Coast.**

These early works involve widening and levelling the roads, relocating the underground services such as water and gas and restoring driveways. This early work will allow the light rail operator to build the track and stations in the centre of the roadway with the least disruption to the road network.

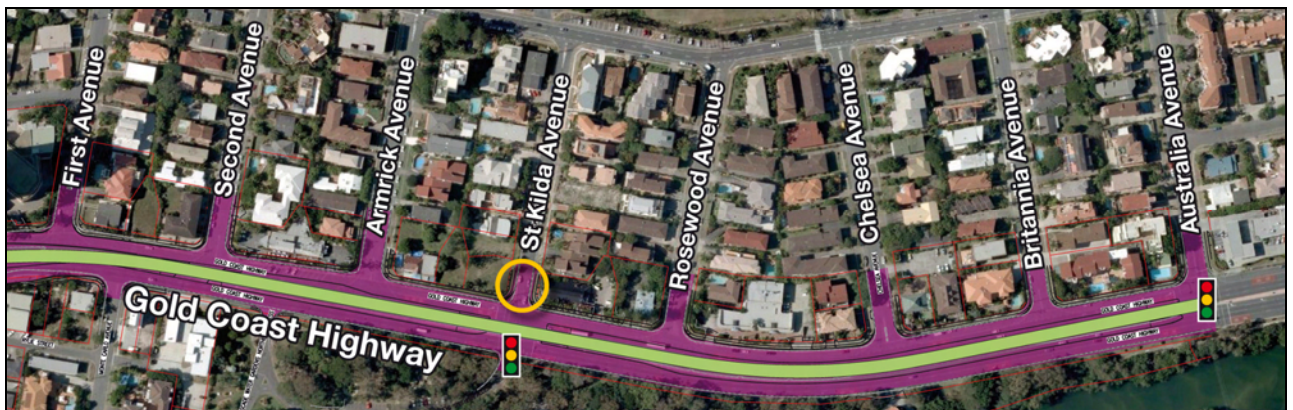
### Removal of parking

As part of the Broadbeach roadworks, there will be changes to the traffic conditions including the progressive removal of on-street parking along the Gold Coast Highway between the intersections of Thornton Street and Australia Avenue. Changes to parking in this area will be permanent. Property and emergency access will be maintained throughout the early works program.

### Changes to parking in St Kilda Avenue

The Gold Coast Rapid Transit project is committed to minimising construction impacts on local businesses and the community. To ensure local businesses can continue to operate during the construction phase, there will be some changes to the current parking conditions in St Kilda Avenue and Chelsea Avenue, Broadbeach.

**From late January 2011**, 10 parking bays in St Kilda Avenue (shown in the map below) will be assigned to two hour controlled parking between the hours of 5:30pm and 9:30pm. Outside these nominated hours, the parking will return to uncontrolled parking.



### To stay up to date with traffic, parking and construction changes in your area:

- Call **1800 967 377** and select the Broadbeach roadworks option to speak to the project team
- Register to receive email and/or SMS updates by emailing your address and phone number to [broadbeach@tmr.qld.gov.au](mailto:broadbeach@tmr.qld.gov.au)
- Sign up for Light Rail Mail at [www.goldcoastrapidtransit.qld.gov.au](http://www.goldcoastrapidtransit.qld.gov.au)

[www.goldcoastrapidtransit.qld.gov.au](http://www.goldcoastrapidtransit.qld.gov.au)