

# Weekly Construction Update # 22



## Gold Coast Light Rail

Week commencing Monday 3 September 2012



### Parklands to Southport

#### Parklands Drive services work

Slab and rail preparation work continues near the Griffith University Station opposite the Showgrounds.

#### GCUH Hospital Station shell

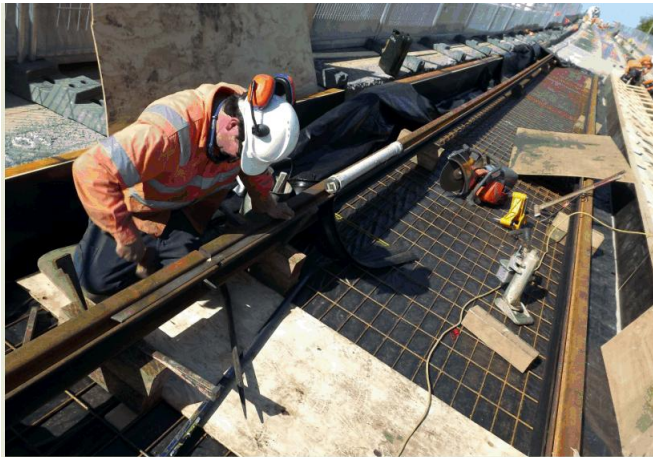
Slab and rail preparation work within the station shell continues.

#### Depot piling continues

Piling and earth works continue at the Depot site.

#### Queen Street median

Lengths of rail have been positioned, excavation continues, and electrical conduits are being laid in anticipation of the first track laying on the light rail project. The first sections of rail will be welded together before being set into the concrete track slab.



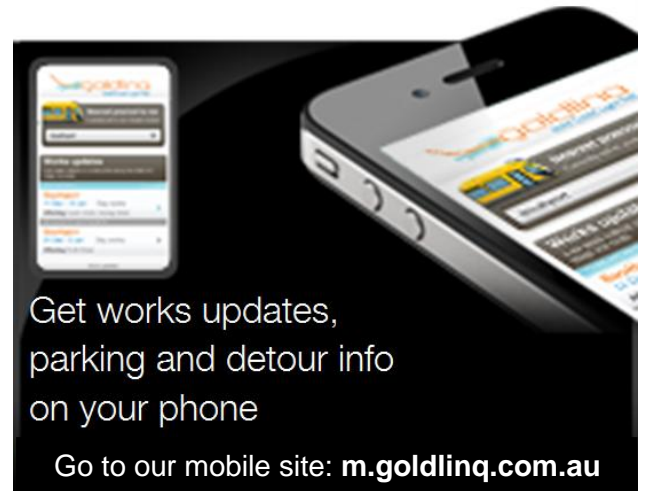
### Scarborough and Nerang works

Work will continue laying underground service conduits across Nerang and Scarborough Streets and an electrical pit will be excavated. Most of this work will be done at night to minimise the impact to businesses.

In Scarborough Street, work laying wastewater lines continues along the road reserve between Nerang and Queen Streets. This work will be done at night and the road area will be reinstated at the end of each shift. Please follow the signs as there will be traffic controllers and detours in place.

Now that temporary lighting is in place, the previous street lighting can be removed between the Australia Fair overpass and Hind Street.

The vegetation in the median area between White and Queen Streets will be removed in preparation for the work to start on the eastern side of Scarborough



Get works updates,  
parking and detour info  
on your phone

Go to our mobile site: [m.goldlinq.com.au](http://m.goldlinq.com.au)

Street, between the National Australia Bank and Park Lane, in the coming weeks.

There is still plenty of parking available in Southport during these construction works. For parking options please visit [goldlinq.com.au](http://goldlinq.com.au)

### Paradise Waters

#### Site established

Further localised vegetation clearing may take place in future. Earth works have commenced in the area to prepare for construction of the light rail bridge.

#### Macintosh Island North Bridge piling works

Initial piling for the construction of the shared light rail and pedestrian bridge over the Nerang River at Macintosh Island North continues. Works to construct the new bridge involve piling, excavation, crane movements, and boring for services.

Pedestrian access under the bridge and on the western side of the Gold Coast Highway will be closed during these works. Alternative pedestrian routes connecting Paradise Waters and Main Beach, and the TTA bus stops are signed.

To assist safe construction, marine access under the Macintosh Island North Bridge will be intermittently closed to the public. Safe access will be maintained at all other times.

#### Macintosh Island North underground services works

Potholing, excavation and boring for underground services will take place on the eastern side of the Gold Coast Highway at Macintosh Island North next week. Temporary footpath closures near the active work area will occur and alternative routes will be signed.



Australian Government  
Nation Building Program



QUEENSLAND  
GOVERNMENT



You can keep up-to-date with the progress of Queensland's first light rail by visiting [goldlinq.com.au](http://goldlinq.com.au), calling the project hotline on 1800 967 377\* or sending an email to [information@goldlinq.com.au](mailto:information@goldlinq.com.au).  
\* Free call within Australia. Call charges may be applied from mobile phones and payphones.



### Track delivery

GoldLinQ will commence delivery of rail lengths to Paradise Waters. Due to their size, the rail lengths must be delivered on an oversized vehicle. The deliveries will take place next week in off-peak traffic periods.

### Surfers Paradise

#### Construction at Elkhorn Avenue and Surfers Paradise Boulevard

Construction at the intersection of Elkhorn Avenue and Surfers Paradise Boulevard continues. Construction noise, dust and vibration will occur at times. Strict environmental controls are in place to minimise these impacts.



Elkhorn Avenue and Surfers Paradise Boulevard

#### Traffic one way southbound from View to Cavill

Surfers Paradise Boulevard is now one-way southbound from View Avenue to Cavill Avenue.

Access to Thomas Drive and Chevron Island is maintained for the majority of construction via a right hand turn from Surfers Paradise Boulevard onto Elkhorn Avenue. Local access from Chevron Island eastbound into the Chevron Renaissance car park is also maintained.

#### Works on Ferny Avenue

**The Gold Coast Highway remains closed to all southbound traffic from the intersection at Ferny Avenue (Gold Coast Highway) to Ocean Avenue.**

Southbound traffic is diverted to Surfers Paradise Boulevard, which has become one-way southbound to Ocean Avenue.

Northbound traffic on Surfers Paradise Boulevard can join the Gold Coast Highway via Cypress Avenue or Ocean Avenue.

Underground service relocations and drainage upgrades continue adjacent to the Marriott Hotel.

#### Changed traffic conditions at Ferny Avenue from Monday 10 September

On Monday 10 September, in preparation for the Gold Coast 600, the Gold Coast Highway will reopen to all southbound traffic from the intersection at Ferny Avenue (Gold Coast Highway) to Ocean Avenue.

Surfers Paradise Boulevard remains southbound only from the intersection of ferny Avenue (Gold Coast Highway) and Surfers Paradise Boulevard.

### Broadbeach

#### Earthworks at Broadbeach South

A platform has been constructed in the area in preparation for a piling rig that will commence works in coming weeks.

#### Traffic switch on Gold Coast Highway

Traffic on the highway between Australia Avenue and Victoria Avenue will be switched from the centre of the roadway to the outer lanes from Monday 10 September. No changes to the number of lanes or turning movements will take place. Access to Queensland Avenue will be restricted on the night of Sunday 9 September to undertake line marking.



Elkhorn Avenue and Surfers Paradise Boulevard



Australian Government  
Nation Building Program



QUEENSLAND  
GOVERNMENT



Gold Coast City Council



You can keep up-to-date with the progress of Queensland's first light rail by visiting [goldlinq.com.au](http://goldlinq.com.au), calling the project hotline on 1800 967 377\* or sending an email to [information@goldlinq.com.au](mailto:information@goldlinq.com.au).

\* Free call within Australia. Call charges may be applied from mobile phones and payphones.