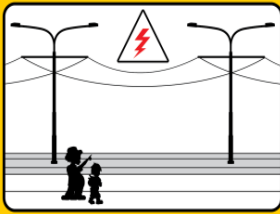


Weekly Construction Update #93

Week commencing 27 January 2014

Get Ready – Powering Up



Overhead wires are live!

As long as you treat the overhead wires and poles as you would standard electricity poles and wires you will always be safe



In an emergency...

In case of an emergency such as fallen wires or damaged poles please call 000 and stay away.

Work commencing 27 January 2014

Parklands

Kerb, footpath, drainage, landscaping works and tram testing continues including night works. Temporary footpath closures are in place near the Engineering Drive bus stop, please use signalised crossings to access Griffith University.

Southport

Queen Street

From Wardoo Street to Nerang Street

Tram testing continues. Finishing works will occur throughout the week and some night works may be required.

Nerang Street

Between Queen and Davenport Street

Finishing works will occur including some night works and lane closures.

Between Davenport Street and Scarborough Street

Finishing works, landscaping and station works will continue including night works.

Scarborough Street

Southport paving and night works

Footpath and landscape works are underway in Southport. The work involves jack-hammering and removing the current pavement, replacing and levelling underground service pit lids and laying a new concrete base and pavers.

Day, night and weekend works will be required to maintain access to businesses and complete work as quickly as possible. Night works will occur between 6:30pm and 6:30am.

Pedestrian detours will be in place. Please follow all directions and signage for safety.

Near Hinze Street

Finishing works will occur including concreting medians, underground services and footpath works. Some night works will be required.

Between Nerang Street and Queen Street

Tram testing, footpath and landscaping works will continue. Do not walk on the tracks, watch for trams and cross at pedestrian crossings.

Night works will be required for pavement works and underground services.

Scarborough Street night lane closures

The southbound lane of Scarborough Street between Young Street and Queen Street will be closed from 7:00pm to 5:00am Monday to Friday.

Southbound traffic will detour via Young Street, Garden Street and Nerang Street.

The northbound lane of Scarborough Street will remain open with both north and southbound traffic movements between Young Street and Hinze Street under traffic control.

Local access will be maintained and closures will continue for up to 12 weeks during footpath demolition and paving works.

Weekly Construction Update #93

Week commencing 27 January 2014

Overhead wires are live and trams are testing in Southport

Overhead power lines are now live in Scarborough Street and tram movements continue.

Trams are currently testing at operational speeds and overhead wires are live from the [Gold Coast University Hospital Station at Parklands Drive to the Broadwater Parklands Station north of the Sundale Bridge](#).

Queen Street

From Scarborough Street to Barney Street

Finishing works including track form kerbs, concrete infills, footpaths and landscaping continues. Lane closures and night works will occur.

Nerang River

Overhead wires are live and trams are testing to Surfers Paradise

Overhead wires are now live in Surfers Paradise from the [Nerang River Bridge to the intersection of Staghorn Avenue and Surfers Paradise Boulevard](#).

Tram testing can be expected to occur at anytime and overhead wires are live from the Gold Coast University Hospital Station at Parklands Drive to Staghorn Avenue, north of the Cypress Avenue Station in Surfers Paradise.

Shared cycle and pedestrian bridge

Piling works continue on the northern side with changes to the pedestrian access on the boardwalk. Girder installation will continue at night with lane closures on the existing traffic bridge.

Light rail bridge

Overhead wires are now live and tram testing will occur at any time. Track finishing and painting will continue.

Nerang River barge movements

The barge Leonora is on the northern side of the river to the east of the traffic bridge. Mariners are advised to use caution. Details are available on the [Maritime Safety Queensland website](#).

Paradise Waters

Gold Coast Highway

Overhead wires are now live and tram testing will occur at any time.

From Tuesday 28 January, landscape works will begin along Commodore Drive. Finishing and station works continue.

Surfers Paradise

Traffic changes at Ferny Avenue (Gold Coast Highway)

From Tuesday 28 January to Saturday 8 February, numerous traffic changes will take place on the Gold Coast Highway southbound. Please drive to the conditions.

The Gold Coast Highway will be closed to all southbound traffic from Tuesday 28 January to Saturday 1 February.

Southbound traffic will be detoured to Surfers Paradise Boulevard, which will be reopened from the intersection of Ferny Avenue, to return to the Gold Coast Highway via Ocean Avenue.



Ferny Avenue to Staghorn Avenue

Overhead wires are now live and tram testing will occur at any time.

Surfers Paradise Boulevard will remain closed from Ferny Avenue to Main Beach Parade until Tuesday 28 January. Ocean Avenue remains one-way

Weekly Construction Update #93

Week commencing 27 January 2014

westbound from Surfers Paradise Boulevard to the Gold Coast Highway.

Works to install drainage along Ocean Avenue between Surfers Paradise Boulevard and the Gold Coast Highway continues. Lane closures will occur.

Finishing works, including asphaltting, kerbing, footpaths and landscaping continue. Night and weekend works will occur. Station works continue.

Staghorn Avenue to View Avenue

Finishing works, including asphaltting, kerbing, footpaths and landscaping continue. Temporary footpath closures will occur. Night and weekend works will occur. Station works continue.

Surfers Paradise Boulevard paving and night works

Footpath and landscape works have begun along Surfers Paradise Boulevard between View Avenue and Elkhorn Avenue. The work involves jack-hammering and removing the current pavement and driveways, replacing and levelling underground service pit lids and laying a concrete base.

Day, night and weekend works will be required to maintain access to businesses and complete work as quickly as possible. Night works will occur between 6:30pm and 6:30am.

Pedestrian detours will be in place. Please follow all directions and signage for safety.

Elkhorn Avenue to Hamilton Avenue

Minor works to prepare for testing and commissioning will continue including overhead pole and line works, station and traffic signal works.

On Tuesday 28 January, investigative works will occur at various locations along Surfers Paradise Boulevard between Elkhorn Avenue and Cavill Avenue from 7:30pm. Construction noise will be associated with these works.

Clifford Street to Thornton Street

Finishing works for underground services, footpaths, landscaping and station works continue.

Works to cut-over telecommunications cables continues at Enderley Avenue and Thornton Street. Continuous works will take place, Monday to Sunday.

From Tuesday 28 January, underground service works will occur on the corner of Surfers Paradise Boulevard and Markwell Avenue.

Broadbeach

Gold Coast Highway Wharf Road to Australia Avenue

Landscaping and station works within the centre median of the Gold Coast Highway continues. Lane closures will occur outside of peak times.

On Wednesday 29 January, works will occur at St Kilda Avenue intersection. Lane closures will occur outside of peak times under police control.

Australia Avenue to Victoria Avenue

From Tuesday 4 February, the southbound bus stop on the Gold Coast Highway at Australia Avenue will be permanently closed. Passengers should make their way to the closest alternative stop located south on the Gold Coast Highway at the Main Place shops.

Landscaping, track infill, energex and station works continue. Lane closures will occur.

On Wednesday 29 and Thursday 30 January, night works will occur at Victoria Avenue intersection to complete traffic signal works. Lane closures will occur under police control.

From Wednesday 29 January, footpath works will commence from Queensland Avenue to Victoria Avenue in front of Main Place Shopping Centre. Lane closures will occur.

Victoria Avenue to Hooker Boulevard

Footpath, landscaping and underground service works continue.

From Tuesday 28 January, night works will occur at Hooker Boulevard, Margaret Avenue and Gold Coast Highway intersection to facilitate traffic signal and underground service works. Works will occur Sunday to Thursday for up to two weeks. Lane closures will occur.

On Sunday 2 February, night works will occur at Hooker Boulevard intersection to complete Energex works. The left hand turn into Casino Drive will be closed with the left hand turn out maintained. Lane closures will occur.

Timing of works is subject to weather conditions and construction constraints.

To un-subscribe email STOP to goldcoastlightrail@macdow.com.au

Keep up-to-date with the progress of Queensland's first light rail and to sign up for updates visit www.goldlineq.com.au or call the project hotline on 1800 967 377*

*Free call within Australia. Call charges may apply from mobile phones and payphones.



Australian Government

CITY OF
GOLD COAST



Queensland Government