

# Weekly Construction Update #82

Week commencing 4 November 2013

**Passenger services are on schedule to commence in June 2014 as planned!**

## *This weekend*

### **Scarborough Street closure**

Scarborough Street north and southbound from Nerang Street to Queen Street will be closed between 7:00pm Friday 1 November and 5:00am Monday 4 November for drainage and road construction. Detours will be in place and local access will be maintained via the southbound direction.

East and westbound through traffic on Short and Lawson Streets will be maintained at the Scarborough Street intersection.

The southbound bus stop near Westpac will be closed during this time and the northbound bus stop near the RSL will also remain closed. The nearest alternative bus stops are located outside the TAFE building and Southport Police Station.

## **Work commencing 4 November 2013**

### **Parklands**

Construction of kerbs, line marking, landscaping and tram testing will occur.

### **Smith Street Bridge**

Rail across the bridge is laid and overhead wires are live in the area.

### **Southport**

#### **Overhead wires are live and trams are testing in Southport**

[Overhead wires are live](#) and trams are testing in Southport from the [Southport Station near Scarborough Street to the Gold Coast University Hospital Station at Parklands Drive](#).

Trams will be testing at operational speeds. Never park or queue on the tracks and remember U-Turns are only legal where there is a sign indicating U-Turn Permitted.

### **Nerang Street**

#### **Between Queen and High Streets**

Track finishing work continues

### **Between Davenport and Scarborough Streets**

Landscaping and station construction continues. There will be work jack hammering footpaths and pedestrian access may change, please observe the signs.

### **Scarborough Street**

#### **Between Nerang Street and Queen Street**

The northbound lane remains closed to traffic to allow paving and kerb construction at the track and road edge.

### **Between White Street and Queen Street**

Kerb and footpath works will occur. Scarborough Street access is available along Owens Lane. The intersection of White and Scarborough Streets will be closed for one week for pavement works.

### **Southport paving and night works**

Footpath and landscape works will continue in Southport from October 2013. Pedestrian access may change during this work.

The work involves jack-hammering and removing the current pavement and driveways, replacing and levelling underground service pit lids and laying a concrete base.

For the duration of footpath paving work in Scarborough Street both day and night works will be required to maintain access to businesses and complete work as quickly as possible.

### **Queen Street**

#### **Near the Croquet Club and Barney Street**

There will be piling work for the final overhead line poles and lane closures for concrete pours for track form construction. Station construction continues. Night works may occur throughout the week.

### **Nerang River**

#### **Traffic bridge**

From Monday to Friday lane closures will occur on the traffic bridge between 8:00pm and 5:00am to facilitate concrete pours for the light rail bridge.

#### **Shared cycle and pedestrian bridge**

Piling works continue on the northern side and there will be changed pedestrian access on the boardwalk.

#### **Light rail bridge**

Track laying across the bridge continues.

Keep up-to-date with the progress of Queensland's first light rail and to sign up for updates visit [www.goldlineq.com.au](http://www.goldlineq.com.au) or call the project hotline on 1800 967 377\*

\*Free call within Australia. Call charges may apply from mobile phones and payphones.



Australian Government

CITY OF  
**GOLDCOAST**



Queensland Government

# Weekly Construction Update #82

Week commencing 4 November 2013

## Nerang River Barge movements

The barge Leonora is on the northern side of the river to the east of the traffic bridge. Mariners are advised to use caution. Details are available on the [Maritime Safety Queensland website](#).

## Paradise Waters

### Gold Coast Highway

Station works continue at Tedder Avenue. Night works will take place at Macintosh Island South to complete bridge works. Single lane closures will occur on the Gold Coast Highway.

## Surfers Paradise

### Ferry Avenue (Gold Coast Highway) and Surfers Paradise Boulevard

From Monday 4 November 2013, construction will recommence following the Gold Coast 600 event. A southbound traffic lane will be re-opened along Ferry Avenue (Gold Coast Highway) from the intersection with Surfers Paradise Boulevard. Surfers Paradise Boulevard will remain closed from Ferry Avenue to Main Beach Parade, with local access only via Main Beach Parade. Ocean Avenue will remain one-way westbound from Surfers Paradise Boulevard to the Gold Coast Highway.



## Ocean Avenue to Elkhorn Avenue

Asphalt, kerbing, footpath, overhead wire pole installation, underground service and station works continue throughout the area.

### Surfers Paradise Boulevard temporary closure

Surfers Paradise Boulevard remains closed to southbound traffic from Staghorn Avenue to Cypress Avenue to facilitate track, station and road construction. Southbound traffic will be detoured to the Gold Coast Highway or the Esplanade to return to Surfers Paradise Boulevard. Night works will take place. Local access is maintained.

## Elkhorn Avenue to Cavill Avenue

Southbound traffic has been relocated to the roadway from the Cavill Avenue station area. Works will continue in the station area.

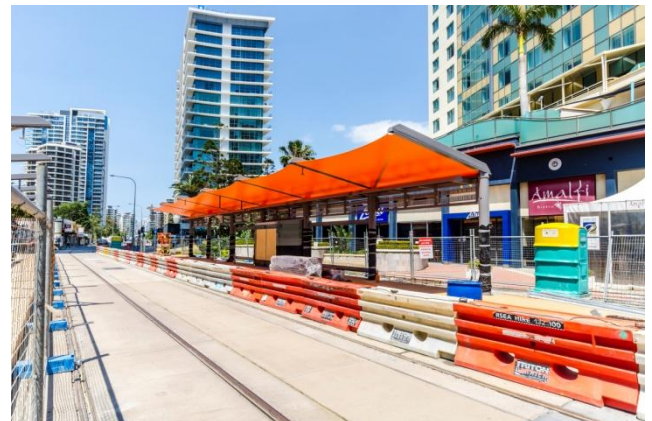
Periodic footpath, landscaping and underground services works continue along Surfers Paradise Boulevard and at Elkhorn Avenue intersection. Construction will occur from 6:30am to 6:30pm.

Night works to finalise the installation of underground services will take place next week, commencing

- Monday 4 November adjacent to Adidas
- Wednesday 6 November adjacent to Gloria Jeans
- Thursday 7 November adjacent to Baritalia.

## Cavill Avenue to Clifford Street

Footpath and finishing works are ongoing in this area. Night works to finalise underground services installation in the footpath at Cavill Avenue, Hanlan Street and Trickett Street from 6:30pm to 6:30am will also take place throughout the week.



Station works in Surfers Paradise

Keep up-to-date with the progress of Queensland's first light rail and to sign up for updates visit [www.goldline.com.au](http://www.goldline.com.au) or call the project hotline on 1800 967 377\*

\*Free call within Australia. Call charges may apply from mobile phones and payphones.



Australian Government

CITY OF  
**GOLDCOAST**



Queensland Government



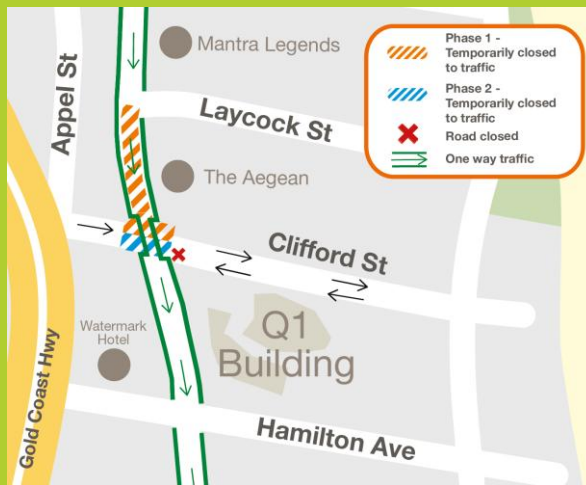
# Weekly Construction Update #82

Week commencing 4 November 2013

## Surfers Paradise Boulevard southbound Laycock Street to Clifford Street

From Monday 4 November, Surfers Paradise Boulevard will be closed to all southbound traffic from Laycock Street to Clifford Street for up to one week to facilitate finishing works, including asphalt, kerbing and guttering. Southbound traffic will be detoured to the Esplanade to return to Surfers Paradise Boulevard via Hamilton Avenue.

From Monday 4 November, the intersection of Clifford Street and Surfers Paradise Boulevard will become eastbound only for up to two weeks to facilitate finishing works, including asphalt, kerbing and guttering. Local access will be maintained.



### Clifford Street to Thornton Street

Finishing works for underground services, footpaths, landscaping and station works continues.

## Broadbeach

### Gold Coast Highway

#### Aubrey Street to Second Avenue

Finishing works continue from Aubrey Street to St Kilda Avenue with lane closures at off peak times.

## Australia Avenue to Pacific Fair Drive

From Monday 4 November 2013, final asphaltting works will begin south of Victoria Avenue to Elizabeth Avenue. These works will occur between 6:30pm and 6:30am and are expected to take up to one week to complete.

Motorists travelling southbound along the Gold Coast Highway will be diverted via contra flow onto the northern lanes of the Gold Coast Highway.

Heavy vehicle southbound traffic will be diverted left at Australia Avenue returning on to the Gold Coast Highway via Surf Parade.

### Florida Gardens Station

Foundation and station structure works continue. Lane closures will occur at off peak times.

### Queensland Avenue

Night works will continue at the Broadbeach North Station. Inside lane closures of the Gold Coast Highway between Queensland and Victoria Avenue will occur.

Installation of overhead wires will occur. Periodic outside lane closures will occur.

### Main Place

Storm water drainage works continue at Main Place. Periodic lane closures will occur between 7:00am and 3:00pm.

### Margaret Avenue

Energex, water main, traffic signal and footpath works will continue at the intersection. Lane closures and pedestrian detours will occur.

### Hooker Boulevard intersection

From Monday 4 to Wednesday 6 November water main and trenching works will occur across the intersection during night works from 6:30pm to 6:30am. Lane closures will occur and access will be maintained.

**Timing of works is subject to weather conditions and construction constraints.**

To un-subscribe email STOP to [goldcoastlightrail@macdow.com.au](mailto:goldcoastlightrail@macdow.com.au)