

CONSTRUCTION NOTICE

September 2013

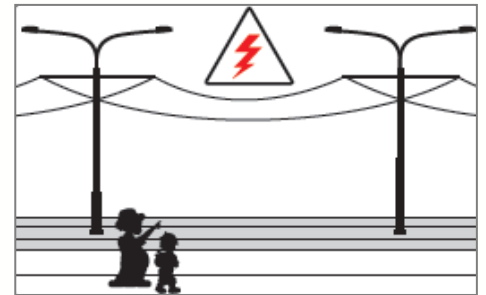


Powering up of overhead wires

From Saturday 07 September 2013 GoldlinQ will begin powering up of overhead wires in your area which will provide electricity to the trams and stations on the light rail system.

Look up and see the danger! Once energised the wires carry live electricity and should be treated with caution.

This will mean several changes to the way you interact with the light rail corridor.



Stay safe:

What to look out for

- Signs will be installed along the light rail corridor to identify when an area is powered up.
- The overhead wires carry 750 volts of electricity which is equivalent to four times the amount of electricity supplied to your home or business.
- The live wires are situated well out of reach approximately 5.8 metres above ground level.
- Keep kites and other flying toys away from all overhead wires and never try to remove an object from the wires.
- Remember if you come across a fallen electrical wire or see objects on the wires contact 000 immediately and never touch or try to move it.

Working near the system safely

Once we've powered up, any works around or within the light rail hazard zone will need to be authorised. The hazard zone is considered more than three metres above ground level, either side of the track and below ground level.

To gain approval for works in the area you will need to contact the team on either 1800 967 377 or info@kdragoldcoast.com.au.



Traffic changes during initial power up of overhead wires:

- Short term delays may occur at intersections and on Queen Street and Nerang Street, Southport between the Queen and Wardoo Street intersection and Scarborough Street and Nerang Street intersection.
- Traffic control measures and detours will also be in place. Pedestrian access routes may change and it is important to follow the instructions of traffic controllers to ensure your safety.
- Residents need to be aware that all pedestrian and motor vehicle movements will be halted for up to twenty minutes and will then continue under traffic control directions. This is vital for safety.



Keep up-to-date with the progress of Queensland's first light rail and to sign up for updates visit www.goldlinq.com.au or call the project hotline on 1800 967 377*

*Free call within Australia. Call charges may apply from mobile phones and payphones.



Australian Government

CITY OF
GOLDCOAST



Queensland Government