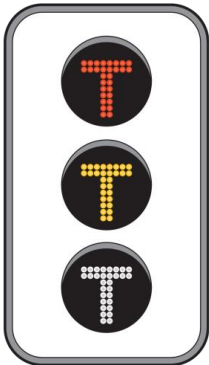


# Weekly Construction Update #72

## Gold Coast Light Rail

Week Commencing Monday 26 August 2013



### T is for Trams

The first 'T' traffic lights are being installed across the corridor. 'T' lights are for trams and are similar to the 'B' bus lights. If you see a red 'T' you do not have to stop, this is instructing the tram to stop. A white 'T' is instructing the tram to go. If you see a white 'T' do not try to cross the intersection and wait for the green arrow.

### Works this weekend

#### Parklands Drive

Parklands Drive will be closed at Hospital Street East, near Alumni Drive, from 7:00pm Friday 23 August to 5:00am Monday 26 August, to allow for asphaltting of this intersection. There will be access to Alumni Drive on Saturday 24 August between 6:00am and 6:00pm. Bus timetables will not be affected.

#### Young Street intersection

Young and Scarborough Street intersection will be partially closed from 7:00pm Friday 23 August and 5:00am Monday 26 August to construct a stormwater pit and connect drainage. Motorists will be diverted to one lane under traffic control.

### Parklands

Track work and station construction continues. Station platforms will be poured in the GCUH station shell.

### Depot

Asphaltting will continue at the Depot entrance and fit out of the maintenance building is almost complete.

### Smith Street Bridge

Occasional day time single lane closures for westbound traffic will occur as work on the bridge nears completion.

### Southport

#### Baratta Street

There will be landscaping and rehabilitation work at the retention basin behind the Depot, which will involve truck movements in Baratta Street for several weeks.

#### Queen Street

##### Between Wardoo and Nerang Streets

Westbound road closures will occur Monday to Friday between 10:00am and 2:00pm. Eastbound closures will occur at night and on the weekend to allow for the removal of the original street lighting. The poles will be removed over several weeks. There will be finishing work on the track and at the Traction Power Supply near Nerang Street.

#### Nerang Street

##### Between Queen and Davenport Streets

Nerang Street Station construction and kerbing work continues.

##### Between Davenport and Scarborough Streets

Construction of Southport Station continues.

#### Scarborough Street

##### Between Nerang Street and Australia Fair

Track laying preparation will continue in the centre of the road.

Access to all driveways along Scarborough Street between Queen and Nerang Streets will be left in/left out only with no right turn across Scarborough Street. This will be a permanent arrangement with traffic now on the final alignment.



Track work in Scarborough Street

Keep up-to-date with the progress of Queensland's first contemporary light rail at [www.goldlineq.com.au](http://www.goldlineq.com.au) or call the project on 1800 967 377\*.

\*Free call within Australia. Call charges may apply from mobile phones and payphones.



Australian Government

CITY OF  
**GOLDCOAST**



Queensland Government

**Between Australia Fair and Short Street**  
Kerb and track finishing work will continue.

**Between Lawson Street and Park Lane**  
Kerb and footpath works will continue.

### White Street intersection partial closure

White Street will become left turn in and left turn out to traffic. Motorists will not be able to turn right into White Street from Scarborough Street. This will be a permanent arrangement.

**Between White Street and Queen Street**  
Construction of Southport South Station and track laying continues.

**Queen Street**  
**Near the Croquet Club**  
Drainage work and construction of the Broadwater Parklands Station continues.

**Barney Street**  
Track preparation work continues.

## Nerang River

**Shared cycle and pedestrian bridge**  
Preparation and concrete works for the northern abutment continues.

**Nerang River light rail bridge**  
The last deck girders will be lifted into place from the barge between Monday and Thursday. The barge will then move to the eastern side of the bridge.

**Nerang River Barge movements**  
The barge Leonora will be in a northern position in the river. Mariners are advised to obey speed limits, buoys and signs. Details are available on the [Maritime Safety Queensland website](#).

## Paradise Waters

**Admiralty Drive**  
The left turn slip lane from Admiralty Drive onto the Gold Coast Highway is now closed in line

with the final alignment for the intersection. Track and underground service works continues.

**Macintosh Island South Bridge**  
Bridge construction continues. Access for vessels under the bridge will be maintained however short delays may occur.

## Surfers Paradise

### Gold Coast Highway Traffic Changes

From Monday 26 August, a southbound traffic lane will be reopened along Ferny Avenue (Gold Coast Highway). Surfers Paradise Boulevard will be closed from Ferny Avenue to Main Beach Parade.

### Gold Coast Highway Night Works

Major construction, including night works, in the area will continue in the lead up to the Gold Coast 600. Night works will take place from Monday to Friday from 6:30pm to 6:30am.

### Ferny Avenue to Main Beach Parade

Surfers Paradise Boulevard will be open for local access from Main Beach Parade. Major construction of track form, underground services and station works continues. Night and weekend works will be required. Works to install the Traction Power Station at Ferny Avenue intersection, adjacent to Golden Gate, will take place on Sunday night from 6:30pm to 6:30am.

### Ocean Avenue to View Avenue

Underground service and track form preparation continues. The [intersection of Staghorn Avenue and Surfers Paradise Boulevard](#) will remain closed to all east-west traffic. Some night works will be required.

Nightworks to finalise the installation of a water main service at Ocean Avenue will take place on Wednesday 28 August from 6:30pm to 6:30am.

Underground service works will take place from 8:00am at the intersection of View Avenue and Surfers Paradise Boulevard.

### Elkhorn Avenue to Cavill Avenue

Surfers Paradise Boulevard is now open to southbound traffic. Footpath, drainage, landscaping and station works will continue. A single shift of night works will take place at Elkhorn Avenue on Tuesday 27 August from 6:30pm.

Day works to complete underground services installations on the corner of Elkhorn Avenue and Surfers Paradise Boulevard, adjacent to Chevron Renaissance will continue. Footpath closures will occur and detours will be in place until Thursday 29 August.

### Surfers Paradise Boulevard Closures

Surfers Paradise Boulevard between [Beach Road and Clifford Street](#) is now closed. Alternative routes and redirections will be signed.

### Cavill Avenue to Beach Road

Night works to install underground services will continue this week from 6:30pm to 6:30am, Monday to Friday. Points of access may change and temporary lane changes will occur.

### Beach Road to Clifford Street

Hanlan Street is now closed to all east and westbound traffic. For access to Hanlan Street, including Centro Shopping Centre, please use the Esplanade. Access into Beach Road will be maintained.

### Clifford Street Intersection

Track preparation works will commence on the northern side of the intersection. All traffic movements through the intersection will be maintained. Works to finalise underground service installations at the intersection will continue.

### Clifford Street to Thornton Street

Southbound lanes between Clifford and Thornton Street have reopened. Works to finalise underground services, traffic signals, footpaths, landscaping and station works continues.

Enderley Avenue is closed to traffic at Surfers Paradise Boulevard to facilitate finishing works

including the construction of asphalt, footpaths, kerbing and landscaping.

## Broadbeach

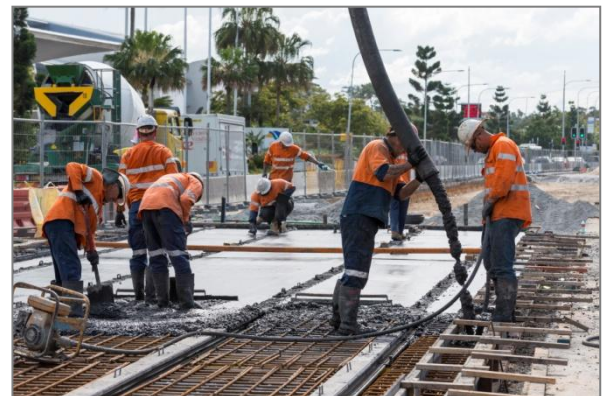
### Gold Coast Highway

Finishing works continue along the Gold Coast Highway from Aubrey Street to Second Avenue with periodic lane closures at off peak times.

Traffic signal works will continue along the highway with periodic lane closures to occur.

### Queensland Avenue

On Monday 26 August from 6:00pm to 6:00am underground services works will occur from Queensland Avenue north along the Gold Coast Highway to the Energex sub-station. For the remainder of the week works in the area will continue during the day. Periodic slip lane closures of the Gold Coast Highway will occur.



Track form concreting in Broadbeach

### Elizabeth Avenue

Underground services and track form preparation works continue on the western side of the highway.

### Margaret Avenue

Night works to upgrade and install underground services continue along the Gold Coast Highway from Margaret Avenue towards the Beach Hotel. Periodic slow lane closures of the Gold Coast Highway will occur.

**Timing of these works is subject to weather conditions and construction constraints.**