



Gold Coast Light Rail

Week Commencing Monday 1 July 2013



Parklands

Track form work around Alumni Place and station construction at Engineering Drive continues.

Depot

Work on the interior fit out of the Depot building continues. Track laying and work on the Council entrance and gatehouse also continues.

Smith Street Bridge

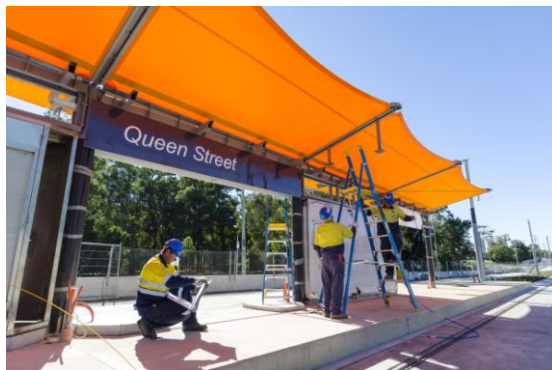
There will be lane closures and detours in place at night during the week to facilitate crane lifts onto the bridge.

Southport

Queen Street

Between Wardoo and Nerang Streets

Final works including traffic signal testing will occur.



Queen Street Station taking shape

Nerang Street

Between Queen and Davenport Streets

Track preparation including concrete pours and kerb work continues. There will be occasional night time lane closures for this work.

Between Davenport and Scarborough Streets

Construction of Southport Station continues.

Scarborough Street

Between Nerang Street and Australia Fair

Track form construction and kerb preparation continues. There will be a partial closure of the laneway next to the HSBC Bank for two weeks to allow for a storm water pit to be constructed.

Between Australia Fair and Lawson Streets

Kerb preparation work and storm water drain construction continues. There will be a partial closure of the Coles delivery driveway for approximately one week.

Between Short Street and White Street

Pavement and drainage works continue.

Between White and Queen Streets

Track laying preparation and construction of Southport South Station continues in the centre median. Some night time lane closures may be required.

Between Lawson Street and Park Lane

Pavement and kerb work continues.

Lawson Street

Work to install the storm water system, traffic signal conduits and kerb continues. Lawson Street at the Scarborough Street intersection will reopen to traffic in early July.

Short Street

Work on the storm water system and installing electrical conduits for the traffic lights continues. Short Street will reopen to traffic at the Scarborough Street intersection in early July.

Queen Street

Near the Croquet Club

Station construction preparation and drainage work continues.

Barney Street

Track laying preparation continues.

Southport Broadwater Parklands

A temporary construction site will be established in the Broadwater Parklands for the pedestrian and cycle bridge to be built on the eastern side of the existing bridge. Pedestrian and cycle access under and over the bridge will be maintained during construction.

Keep up-to-date with the progress of Queensland's first light rail and to sign up for updates visit goldlink.com.au or call the project hotline on 1800 967 377*

*Free call within Australia. Call charges may apply from mobile phones and payphones.



Australian Government
Nation Building Program



CITY OF
GOLDCOAST



Queensland Government



Nerang River

Construction continues on bridge decks and bridge piers including piling and headstocks.

Nerang River Barge Movements

The large barge Leonora will continue with piling works on the northern side of the navigation channel. Approaches to the bridge are marked and vessels should use extreme caution when transiting this area.

Mariners should obey speed limits, buoys and signs and are advised of the reduced overhead clearance at the temporary navigation span of four metres at the highest astronomical tide. Details are available on the [Maritime Safety Queensland website](#).

Paradise Waters

Admiralty Drive

Traffic access into and out of Paradise Waters will be maintained, however points of access may change.

Macintosh Island South Bridge

[Driven piling works](#) will be completed and preparation for headstock construction will occur.

Surfers Paradise

Ferny Avenue to Main Beach Parade

Piling, underground services and track form preparation continue on Surfers Paradise Boulevard. Underground services work will occur at the Gold Coast Highway. Night works will be required in this area throughout the week.

Ocean Avenue to View Avenue

Underground service and track form preparation continues. The [intersection of Staghorn Avenue and Surfers Paradise Boulevard](#) will remain closed until mid July to all east-west traffic. Some night works will be required. Southbound traffic will be maintained on Surfers Paradise Boulevard.

Surfers Paradise Boulevard will be closed to through traffic between Cypress Avenue and View Avenue from 7:00am Wednesday 3 July to

7:00pm Thursday 4 July 2013. Alternative routes and redirections will be signed for access to Surfers Paradise Boulevard, Chevron and Cronin Islands.

Gold Coast Highway Traffic Diversions

The Gold Coast Highway is closed to all southbound traffic from the intersection with [Ferny Avenue to Ocean Avenue](#) with traffic diverted to Surfers Paradise Boulevard.

The Surfers Paradise Boulevard entry to Golden Gate will also be closed to complete track form works. Local access will be maintained with entry and exit via Ferny Avenue (Gold Coast Highway) northbound.

Elkhorn Avenue to Cavill Avenue

Surfers Paradise Boulevard is now open to southbound traffic. Footpath, landscaping and station works will continue.

Surfers Paradise Boulevard Closures

Surfers Paradise Boulevard between [Beach Road and Clifford Street](#) is now closed for up to three months. Waste collection and delivery loading bays will be maintained via local or side street access. Alternative routes and redirections will be signed. Please drive to the conditions.

Cavill Avenue to Beach Road

Works to install underground services within the construction area continue. A temporary road closure of Surfers Paradise Boulevard from Cavill Avenue to Beach Road, will take place next Monday 1 July and Tuesday 2 July from 6:30pm to 6:30am. Night works will take place on Cavill Avenue for up to three weeks from 12:00am to 10am, Sunday to Thursday.

Beach Road to Trickett Street

To facilitate underground service installations, Hanlan Street is now closed to all east and

Keep up-to-date with the progress of Queensland's first light rail and to sign up for updates visit goldlink.com.au or call the project hotline on 1800 967 377*

*Free call within Australia. Call charges may apply from mobile phones and payphones.



Australian Government
Nation Building Program



CITY OF
GOLDCOAST



Queensland Government



westbound traffic. For access to Hanlan Street, including Centro Shopping Centre, please use the Esplanade.

Trickett Street to Clifford Street

Works to install underground services within the construction area and along the eastern and western footpath will occur. Night works will take place to facilitate construction.

Clifford Street to Thornton Street

Southbound traffic movements between Clifford and Thornton Street have reopened. Thornton Street will be closed for two weeks to accommodate underground service installations and traffic signals.

Broadbeach

Gold Coast Highway

Aubrey Street to Fern Street

Kerb works continue along the centre median of Gold Coast Highway. During these works periodic lane closures will occur.

Second Avenue

Rail delivery, track laying and concrete pours continue from Second Avenue towards Australia Avenue. Periodic lane closures will occur.

Queensland Avenue night works

Night works from 6:30pm to 6:30am to relocate underground services continue on the eastern side of the Gold Coast Highway from Queensland Avenue to the substation. Periodic slow lane closures will occur. Access to Queensland Avenue and Main Place will be maintained.

Main Place

Drainage and underground services works will continue this week outside Main Place. The works will be a combination of day and night works and periodic slow lane closures will occur.

Margaret Avenue

From Monday 1 July night works to upgrade and install underground services will begin along the Gold Coast Highway from Margaret Avenue towards the Beach Hotel. Periodic slow lane closures of the Gold Coast Highway will occur.

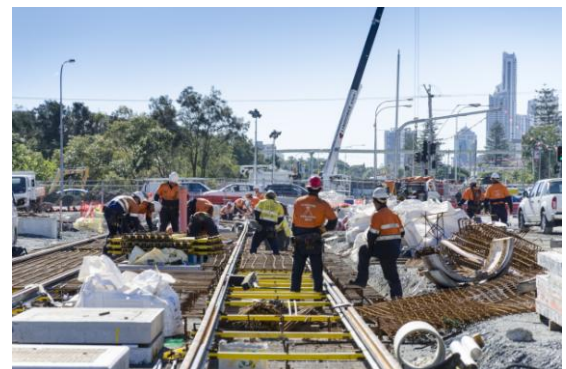
Wharf Road partial intersection closure

The intersection of Wharf Road and the Gold Coast Highway is partially closed and left in / left out only. For motorists travelling north a detour is available via Wharf Road (eastbound direction) and Fern Street. For motorists travelling east and wanting to cross the intersection a detour is available via Gold Coast Highway and Clifford Street (eastbound direction). Temporary single lane closures northbound and southbound on the Gold Coast Highway will also occur. It is anticipated the works will take four weeks to complete (see map).



Elizabeth Avenue

Piling works will begin on the Tallebudgera Creek Bridge from 7:00am to 6:00pm Monday to Friday opposite Elizabeth Avenue. The works will take one week to complete.



Track work in Broadbeach

Keep up-to-date with the progress of Queensland's first light rail and to sign up for updates visit goldlink.com.au or call the project hotline on 1800 967 377*
*Free call within Australia. Call charges may apply from mobile phones and payphones.



Australian Government
Nation Building Program



CITY OF
GOLDCOAST



Queensland Government