

Environmental Facts

FACT SHEET JULY 2012

Loders Creek, Southport



GoldLinQ is committed to delivering a sustainable Gold Coast light rail and is implementing a comprehensive environmental management plan to cover design and construction activities associated with the works.

The Gold Coast's environment is a major consideration in delivering Queensland's first light rail. GoldLinQ's environmental management plan identifies what needs to be protected and the controls necessary.

This includes the waterways in and around the light rail alignment, regional ecosystems at the northern end of the alignment, cultural heritage aspects, along with the usual sediment and erosion, noise, vibration and dust issues associated with construction activities.

During construction, supervisors and environment team members will actively monitor and review environmental controls and make improvements where necessary.

GoldLinQ's environmental performance is audited every three months to ensure it continues to perform to a high standard.



Environmental monitoring

As part of the overall environmental management process, an extensive monitoring program is being implemented encompassing ecological measures as well as noise, vibration, dust, soil, surface and ground water. GoldLinQ has already undertaken baseline noise monitoring along the light rail corridor. Baseline water quality monitoring has been undertaken of receiving waters, including local creeks, canals and rivers as well as groundwater. Extensive acid sulphate soil testing has also been done.



Protecting our wildlife

Did you know about Gold Coast's protected frog species?

The Green Thighed Frog is native to the east coast of Australia and has been recorded in the Loders Creek Catchment in Southport. Protected under the *Nature Conservation Act 1992* (QLD) as a near threatened species, the Green Thighed Frog has very distinctive bright

green markings around its groin and thighs. You can often hear this distinctive frog when it makes a series of quacks or wok sounds.

This frog lives around grassy semi-permanent ponds and flood prone areas. Breeding occurs between September and May, typically after heavy rains.



Wildlife

During construction, fauna spotter-catchers will be on hand to monitor works and ensure wildlife is relocated when necessary. In addition, independent ecologists will be on hand to monitor the impact of construction activities on protected frog species.

Cultural heritage

GoldLinQ recognises the importance of conserving Indigenous, historical, shared and natural heritage. GoldLinQ's works will be carried out in accordance with the project's cultural heritage management plan. This plan clearly identifies all known locations of culturally significant sites and will guide GoldLinQ in the event of any new finds.

Sustainability

GoldLinQ is committed to the sustainable delivery of the Gold Coast light rail project. Throughout the project, team members will consistently review decisions, designs and construction methods to reduce the amount of resources required, therefore minimising the impact on the community and ensuring value for money.

GoldLinQ's success will be measured against targets that reflect the quadruple bottom line - cost, environmental,

community and quality - to ensure the project is accountable and responsible.

Sustainability initiatives identified and implemented by GoldLinQ's Design and Construction partner McConnell Dowell (MacDow) include:

- Maximising recycling content of construction material.
- Minimising the amount of waste going to landfill.
- Working with affected stakeholders to minimise construction impacts where possible.

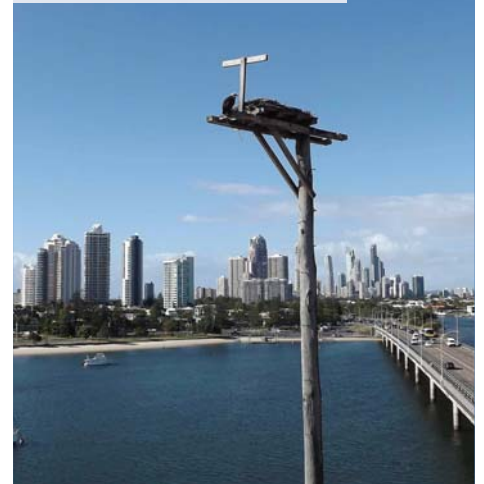
About light rail

Construction to deliver Stage One of the Gold Coast light rail commenced in January 2012. Consisting of 14 trams and 16 stations, Stage One will service a 13-kilometre route between the Gold Coast University Hospital and Broadbeach, one of the fastest growing regions in Australia.

About GoldLinQ

In June 2011 GoldLinQ was awarded the contract by the Queensland Government to build, finance, operate and maintain Queensland's first ever light rail system. The GoldLinQ consortium consists of McConnell

Relocation of Gold Coast's favourite Osprey pair occurred under the watchful eye of a Fauna Spotter-Catcher



Dowell Constructors (Aust) Pty Ltd (MacDow), Bombardier Transportation Australia Pty Ltd and KDR Gold Coast Pty Ltd. Collectively the companies have decades of experience delivering and operating rail projects across Australia and around the world.

To keep up-to-date with the progress of Queensland's first light rail network and sign up for updates visit www.goldlinq.com.au or call the project hotline on 1800 967 377*.

*Free call within Australia. Call charges may apply from mobile phones and payphones.



Australian Government
Nation Building Program



QUEENSLAND
GOVERNMENT

Gold Coast City Council

TRANSLink