



Works Notification

July 2017

Gold Coast Light Rail Stage 2

SMITH STREET AND NAPPER ROAD - FINAL ASPHALT RESURFACING
PROGRESSIVE TEMPORARY LANE CLOSURES AND NIGHT WORKS



Artist impression

From Sunday 16 to Thursday 20 July 2017 between 8.00pm and 5.00am night work will occur over five (5) nights to place the final asphalt pavement and install the electrical overhead wiring across Napper Road as part of the Gold Coast Light Rail Stage 2 project.

These works must be undertaken at night when traffic volumes are at their lowest. In the event of wet weather or unforeseen circumstances, this activity will occur on the next available night shift.

Works will include:

- Temporary road closure at Napper Road from Smith Street to Greenacre Drive between 8.00pm and 5.00am for up to three (3) nights. **Refer to detour map overleaf.**
- Removal of the existing asphalt and placing new asphalt.
- Installation of signal sensors. These sensors are under the new road surface and detect vehicle presence at the intersection to trigger traffic lights.
- Installation of electrical overhead wiring (for trams) crossing the Napper Road intersection.
- Intersection completion works (traffic signals, signage, line marking and concrete medians).

What to expect:

- Traffic control for lane closures, diversions and detours including signage to direct motorists.
- Visual message boards will operate in the area to keep you informed.
- Increased noise levels and vibration from machinery, equipment and site vehicles.
- Dust associated with construction activities, water trucks will be onsite to minimise dust.
- Strong petroleum odours are omitted during the base asphalt placement. Odours will dissipate as the product sets.

Every effort will be made to keep disruption to a minimum for residents in proximity to these activities. The Gold Coast Line Rail Stage 2 team apologises for any inconvenience and appreciates the community's continued patience during these important works.

Detour map:



Motorists are advised to avoid the area if possible during these works and seek an alternative route as delays are expected.

The detour map above is a guide to assist with access during the reconstruction works in your area.

For information on dates and times of road closures, please visit www.gclrstage2.com.au or call the project team on 1800 425 799.

Due to these temporary closures, local bus services may be disrupted. Visit translink.com.au or call 13 12 30 for more information about changes to bus services.

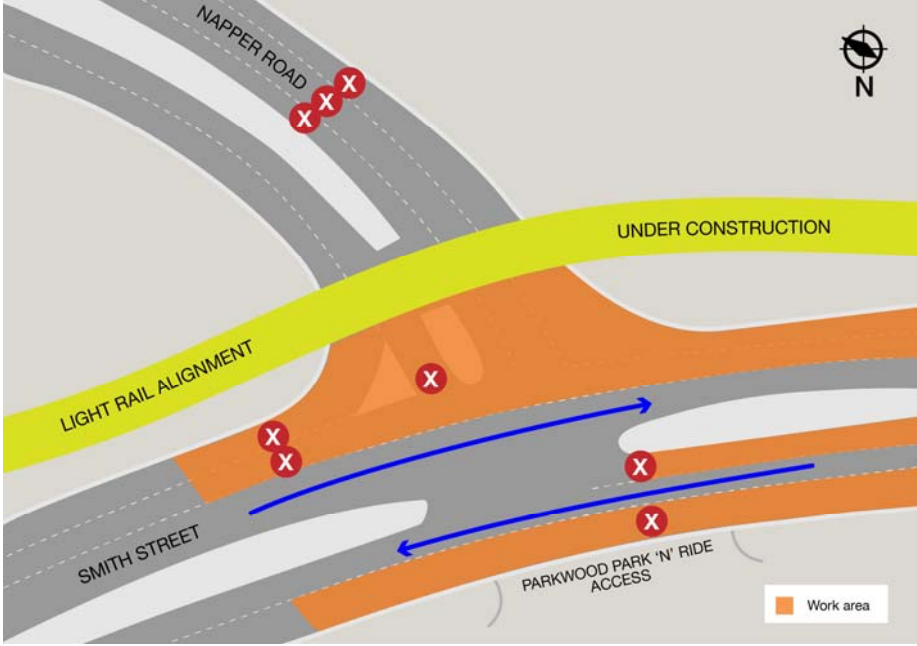
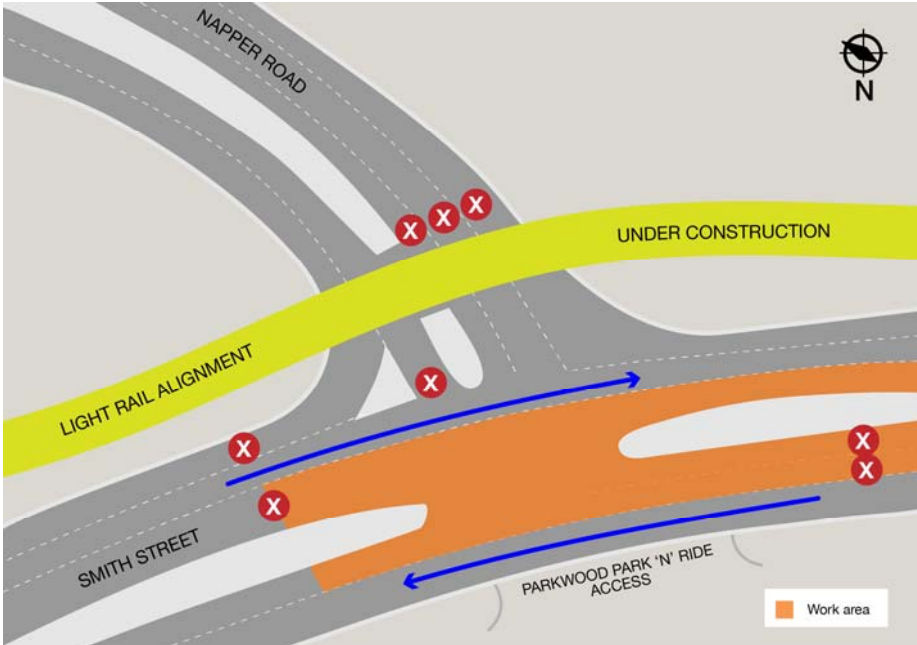


If you have any questions or would like to register for more information, please contact the CPB Contractors Project Team on **1800 425 799*** or email gclrstage2@cpbcon.com.au. Visit www.gclrstage2.com.au anytime for more information and updates.

** Free call within Australia. Call charges may apply from mobile or pay phones.*

Lane closures:

The maps below are a guide to illustrate temporary lane changes during the final asphalt resurfacing activities and can change depending on weather and unforeseen construction issues. Electronic message boards will provide date changes if required during these works.

<p>This closure will occur between Sunday 16 July and Tuesday 18 July 2017</p> <p>Night works 8.00pm to 5.00am</p>	<p>Napper Road is closed to through traffic between Smith Street and Greenacre Drive, detour in place.</p>  
--	---



Australian Government

BUILDING OUR FUTURE

CITY OF
GOLDCOAST™

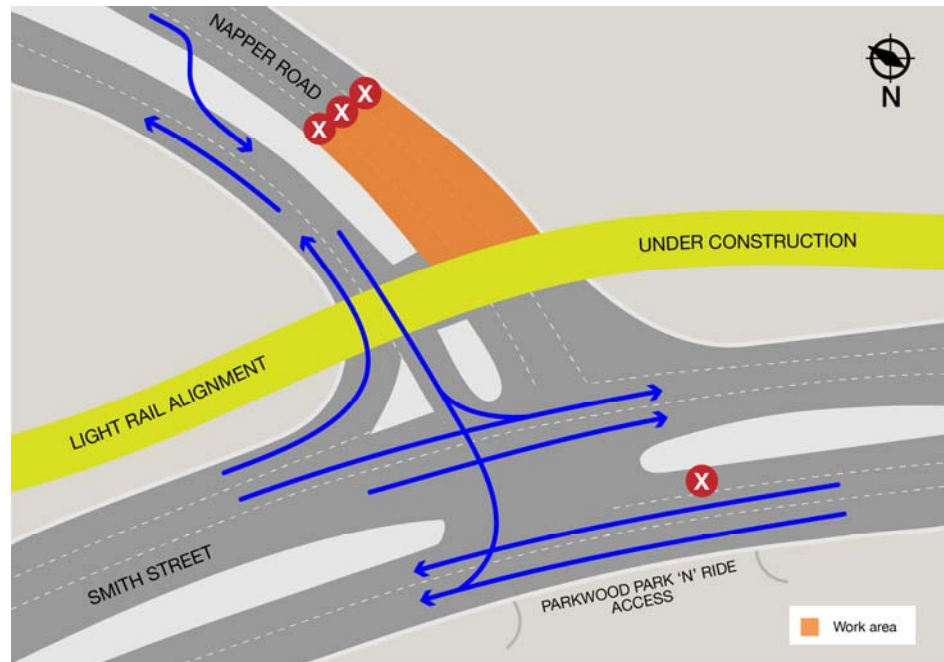
GoldlineQ
Gold Coast Light Rail



Queensland Government

**Night works 8.00pm to 5.00am
Wednesday 19 July 2017**

Majority of traffic movements will remain open, however, lanes will be reduced on Napper Road with contra-flows in place. No right turn onto Napper Road from Smith Street.



**Night works 8.00pm to 5.00am
Thursday 20 July 2017**

All traffic movements will remain open, however, lanes will be reduced on Napper Road with contra-flows in place.

